

PROFILE 194

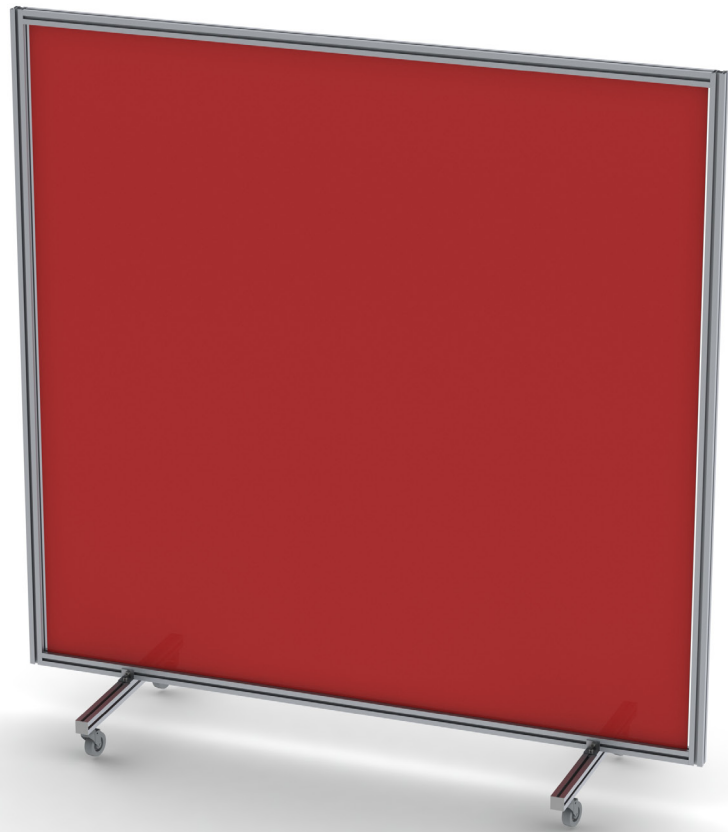
– build up your dream !

Profile 194 is a strong square profile with a standard Foga channel to each face ideal for exhibition booth and machine guard environments.

There are a number of feet options to complement the profile including adjustable feet and foot plates.

The profile is 40x40mm and can be used as both uprights and rails. Available from stock in 5m lengths. Profile 194 can also be successfully rolled to a radius of 750mm

We are quite happy to cut the profile to any desired length and fit the connectors. Ready for you to just simply assemble using a simple 4mm Allen key

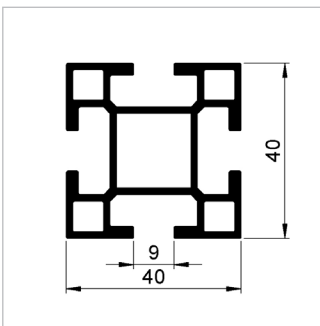


FACTS:

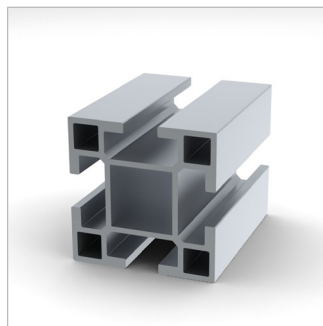
Natural anodised aluminium profile 194 is supplied in 5 m stock lengths or can be cut to custom sizes.

Max recommended depth on media is 9 mm.

Art No	Description	Size	Packaging
194	Profile 194	40x5000x40 mm	100 m
615	Coupling 615		100 pcs



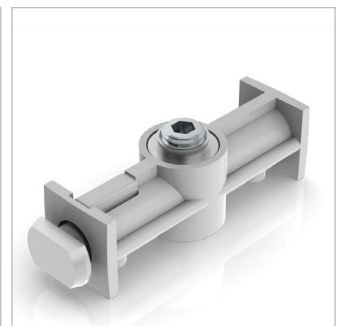
Profile 194.



Strong four channel profile 194.



Hinge for fitted for door solution.



Patented coupling 615.